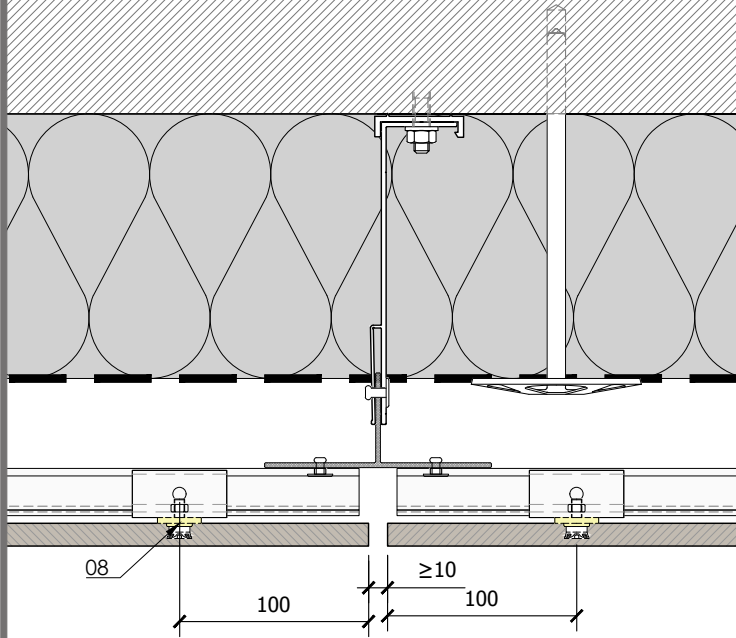
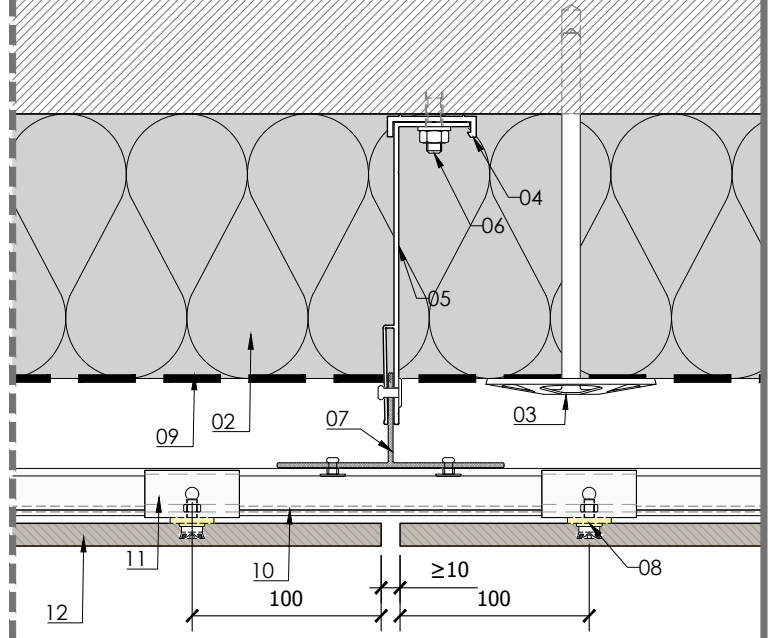


SYSTEM LAPITEC H2 FIXING WITH FZP II T

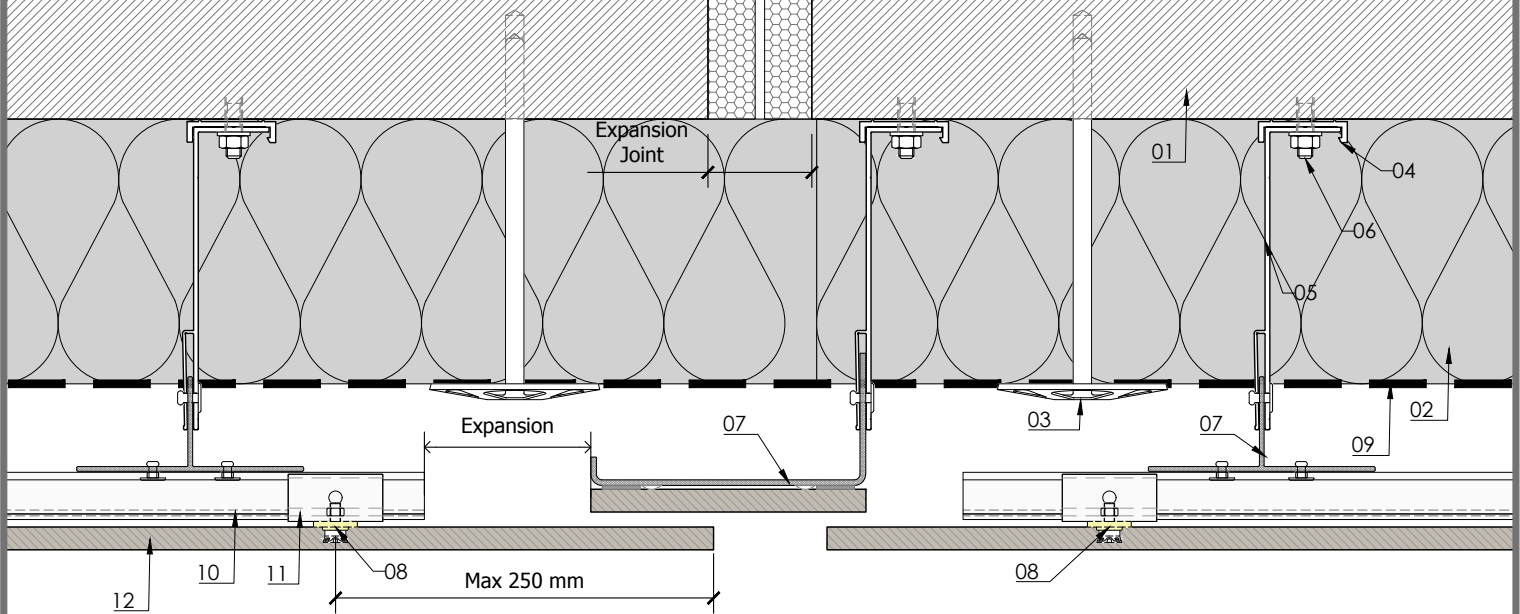
Detail H2-1 Vertical joint (horizontal C rails junction)



Detail H2-2 Vertical joint



Detail H2-3 Vertical expansion joint



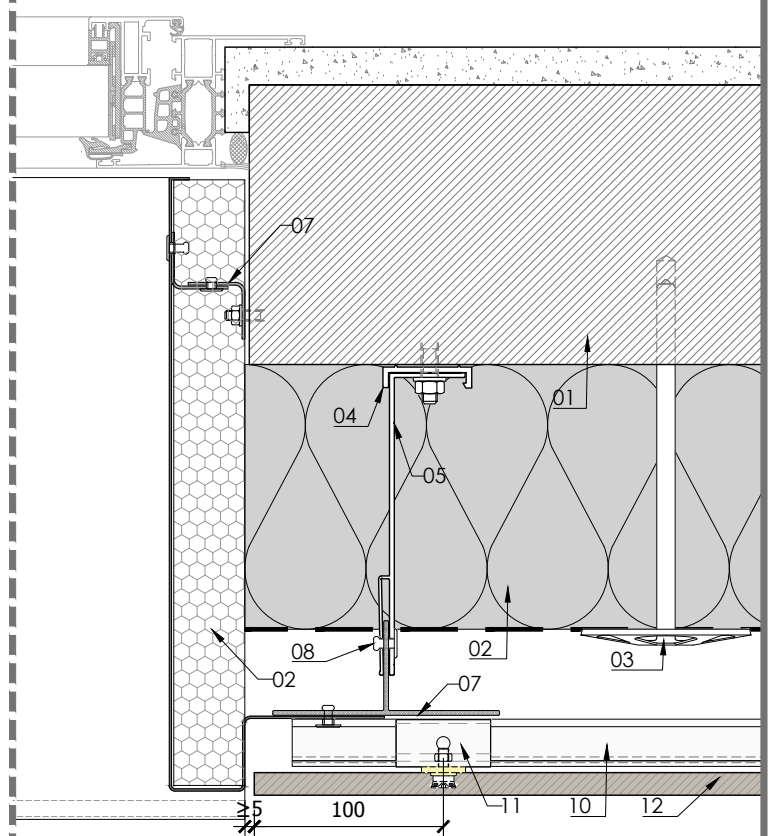
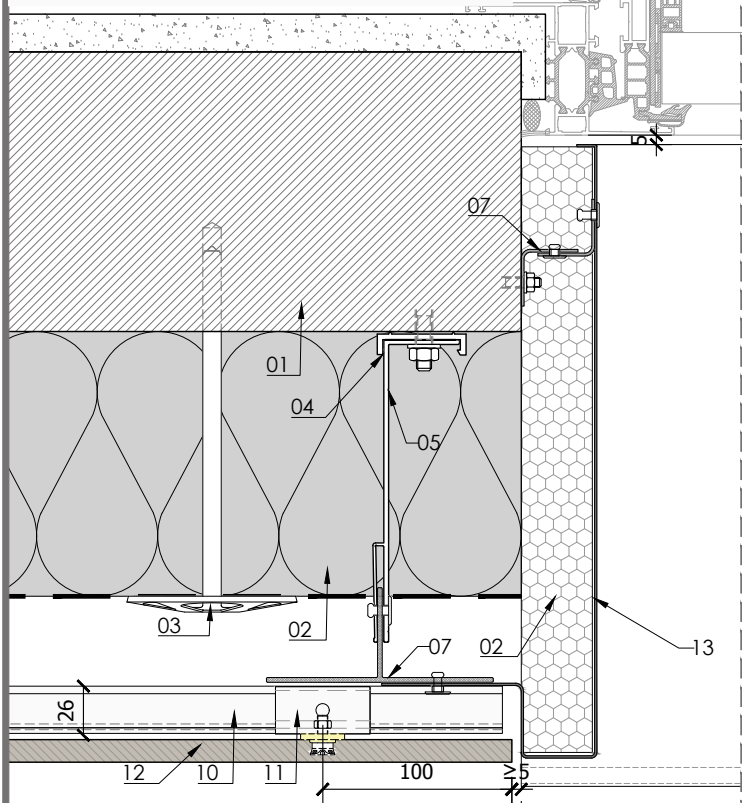
MATERIALS:

- 01 - Support (eg: concrete, core bricks...)
- 02 - Insulation layer (eg: mineral wool...)
- 03 - Insulation layer fixing element
- 04 - Thermo-stop

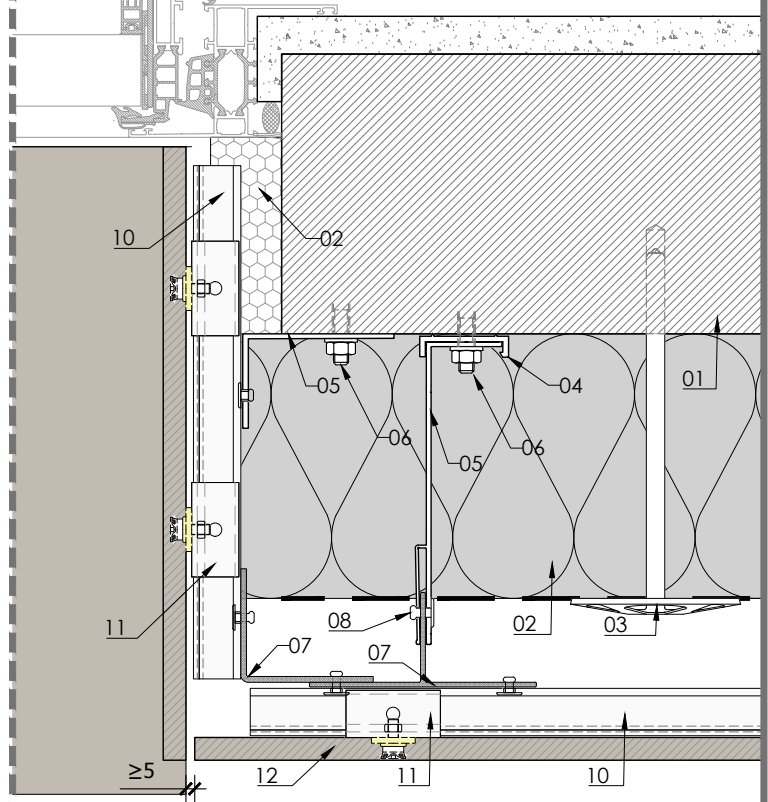
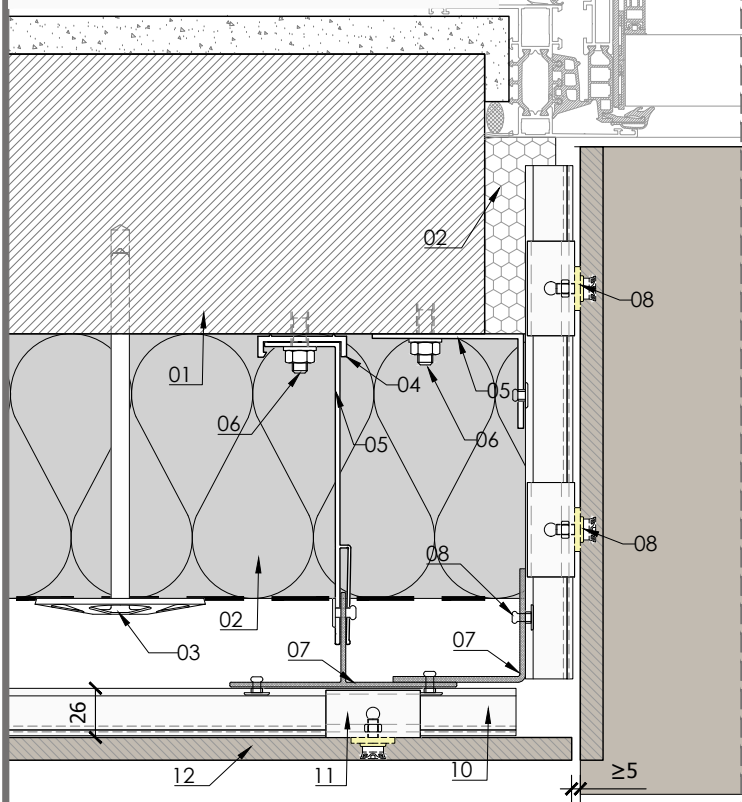
- 05 - Bracket (eg: aluminium, galvanised steel...)
- 06 - Anchor
- 07 - Vertical T profile
- 08 - Fischer FZP-II 11x8 M6/T/12 PA
- 09 - Vapour barrier

- 10 - Horizontal C rail
- 11 - Clip/Hanger
- 12 - Lapitec 12 mm thickness
- 13 - Flashing

Detail H2-4 Window jamb solution with flashing



Detail H2-5 Window jamb solution with Lapitec



MATERIALS:

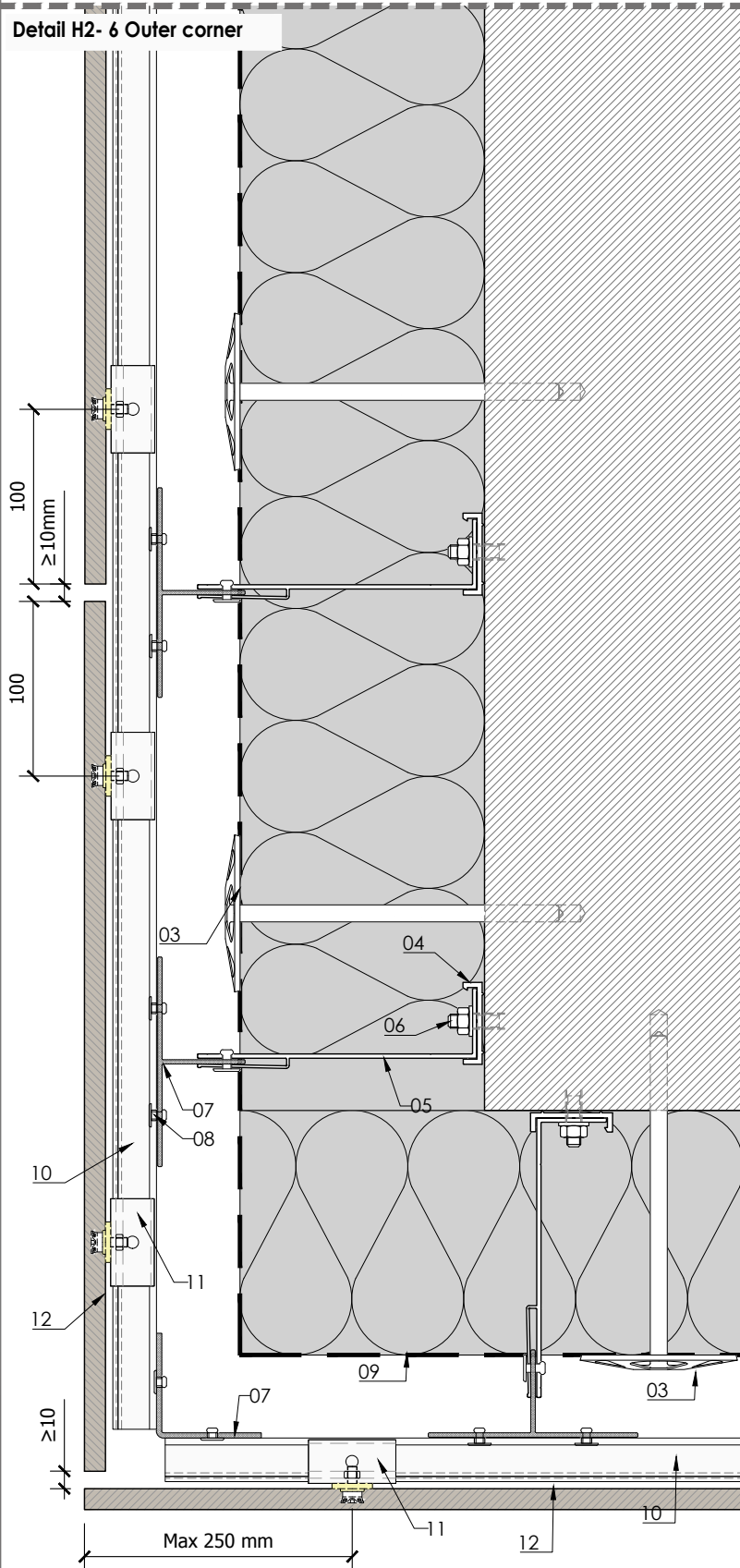
- 01 - Support (eg: concrete, core bricks...)
- 02 - Insulation layer (eg: mineral wool...)
- 03 - Insulation layer fixing element
- 04 - Thermo-stop

- 05 - Bracket (eg: aluminium, galvanised steel...)
- 06 - Anchor
- 07 - Vertical T profile
- 08 - Fischer FZP-II 11x8 M6/T/12 PA
- 09 - Vapour barrier

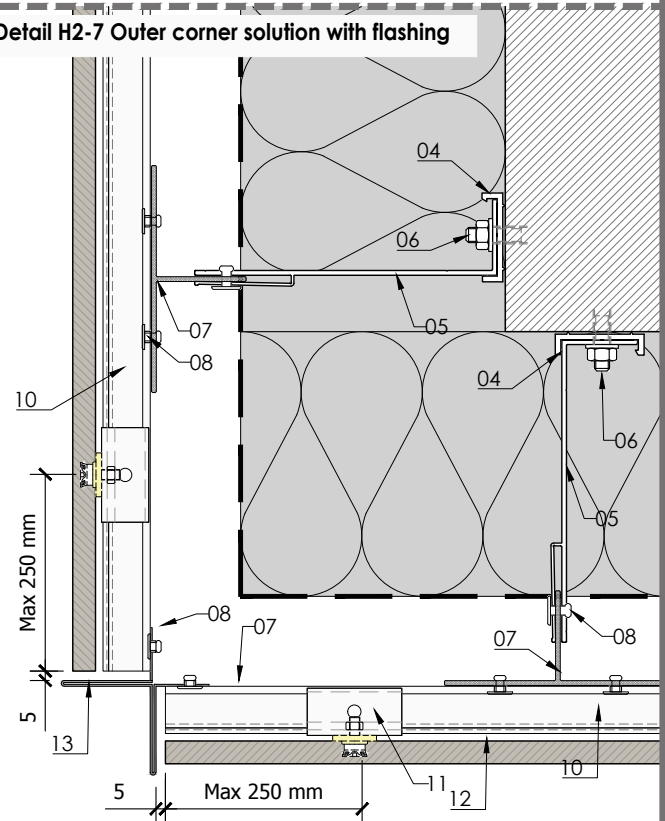
- 10 - Horizontal C rail
- 11 - Clip/Hanger
- 12 - Lapitec 12 mm thickness
- 13 - Flashing

SYSTEM LAPITEC H2 FIXING WITH FZP II T

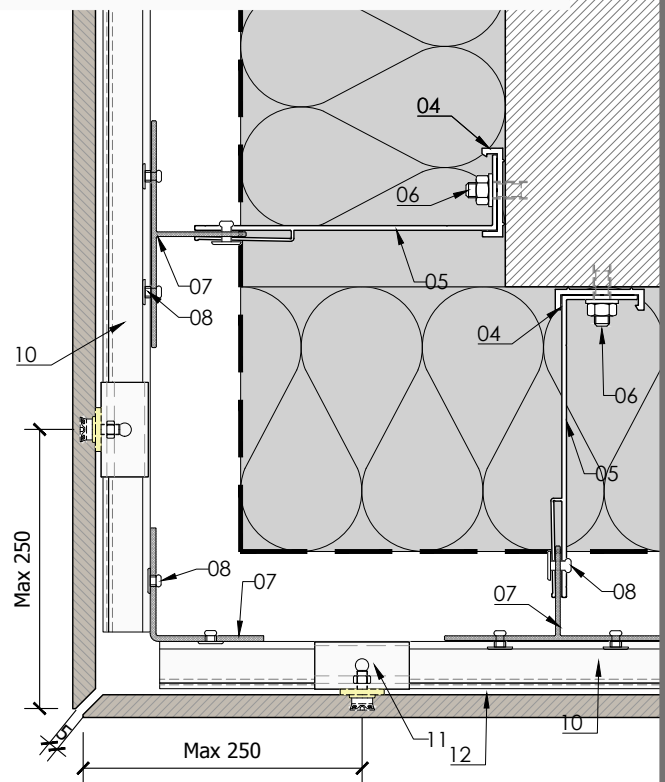
Detail H2- 6 Outer corner



Detail H2-7 Outer corner solution with flashing



Detail H2-8 Outer corner solution with beveled slabs



MATERIALS:

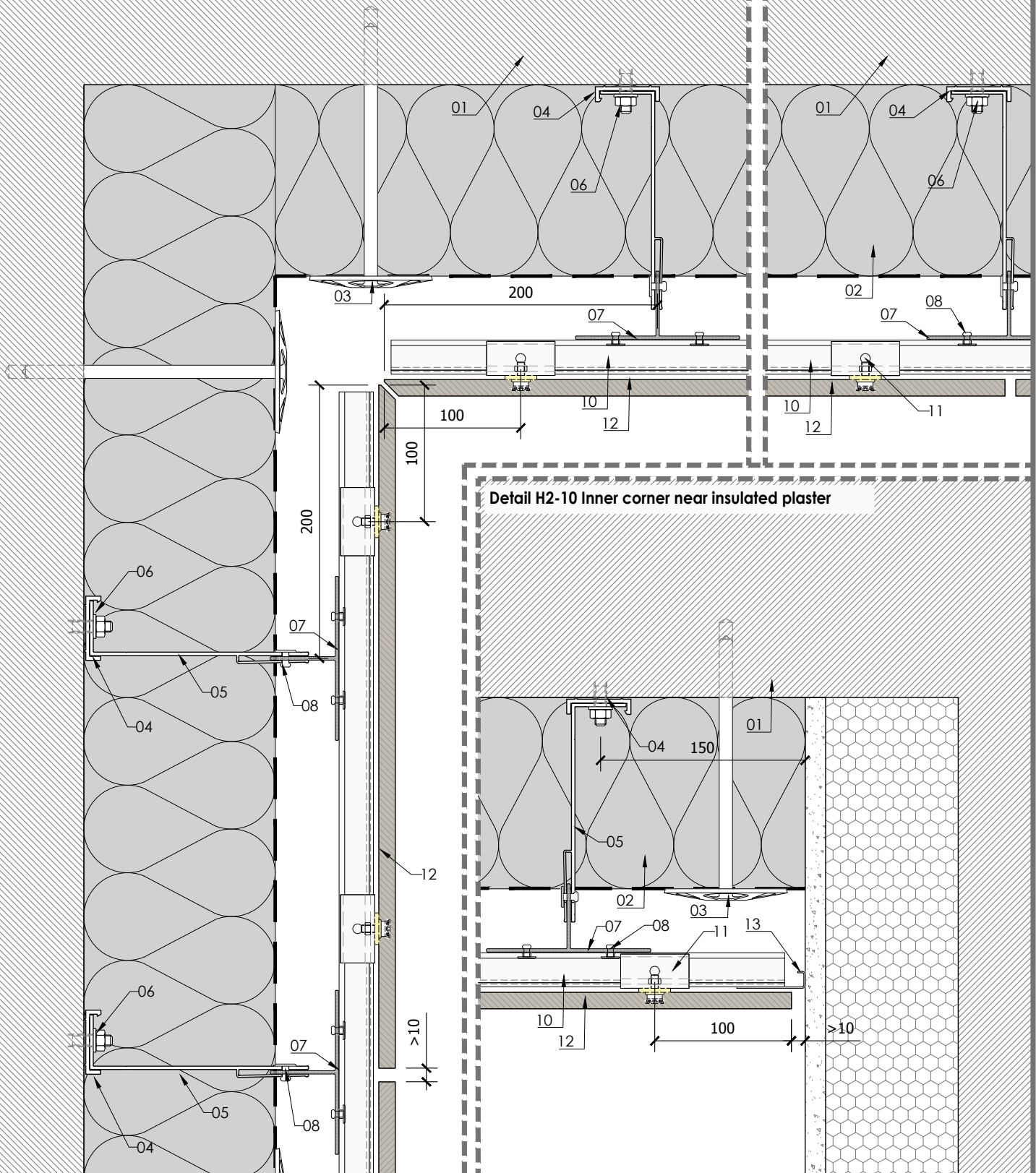
- 01 - Support (eg: concrete, core bricks...)
- 02 - Insulation layer (eg: mineral wool...)
- 03 - Insulation layer fixing element
- 04 - Thermo-stop

- 05 - Bracket (eg: aluminium, galvanised steel...)
- 06 - Anchor
- 07 - Vertical T profile
- 08 - Fischer FZP-II 11x8 M6/T/12 PA
- 09 - Vapour barrier

- 10 - Horizontal C rail
- 11 - Clip/Hanger
- 12 - Lapitec 12 mm thickness
- 13 - Flashing

SYSTEM LAPITEC H2 FIXING WITH FZP II T

Detail H2-9 Inner corner solution with beveled slabs



MATERIALS:

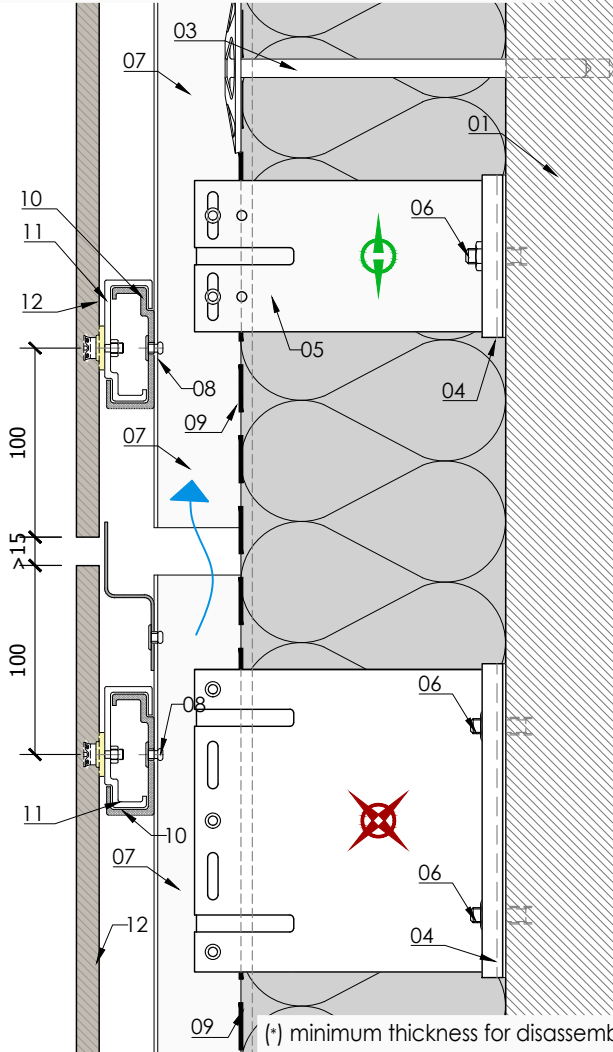
- 01 - Support (eg: concrete, core bricks...)
- 02 - Insulation layer (eg: mineral wool...)
- 03 - Insulation layer fixing element
- 04 - Thermo-stop

- 05 - Bracket (eg: aluminium, galvanised steel...)
- 06 - Anchor
- 07 - Vertical T profile
- 08 - Fischer FZP-II 11x8 M6/T/12 PA
- 09 - Vapour barrier

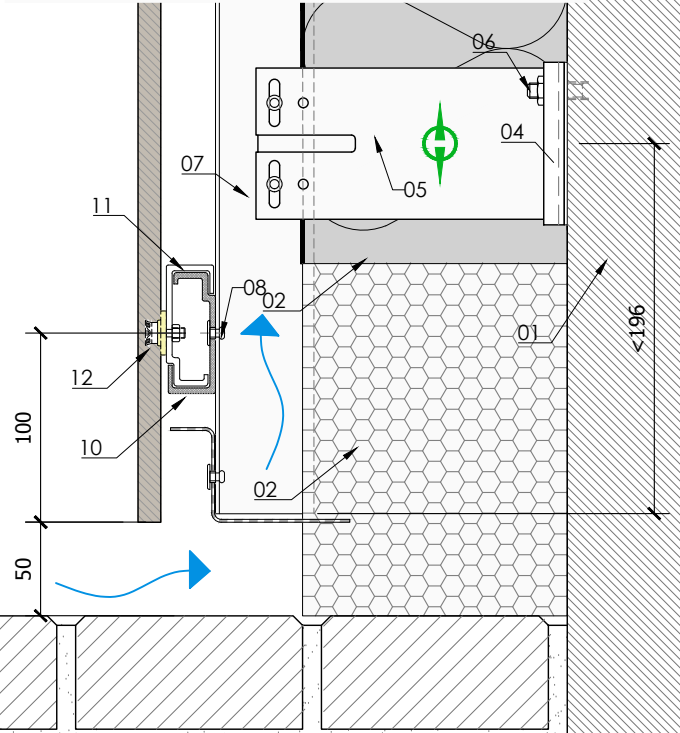
- 10 - Horizontal C rail
- 11 - Clip/Hanger
- 12 - Lapitec 12 mm thickness
- 13 - Flashing

SYSTEM LAPITEC H2 FIXING WITH FZP II T

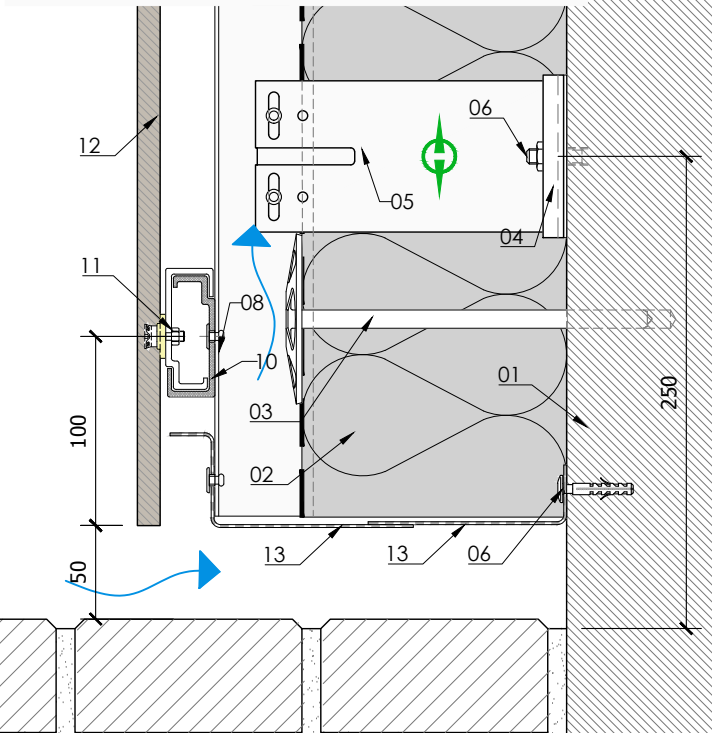
Detail H2-11 Horizontal joint (T profiles junction)



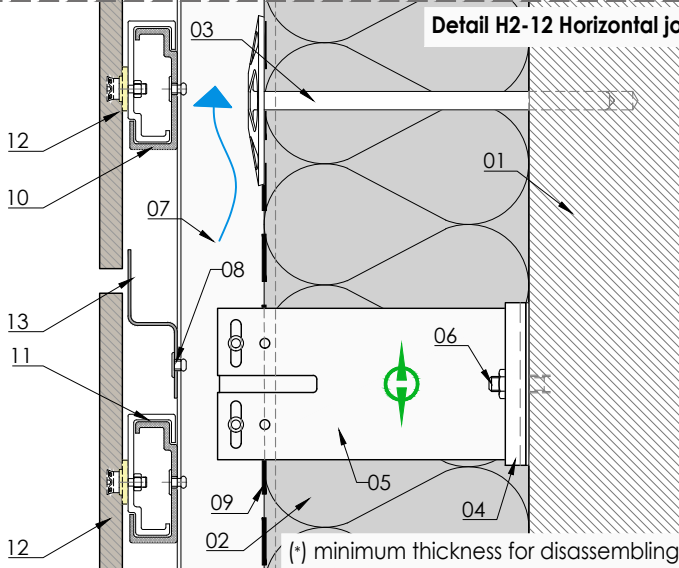
Detail H2-13 Baseboard termination with insulation



Detail H2-14 Baseboard termination without insulation



Detail H2-12 Horizontal joint



MATERIALS:

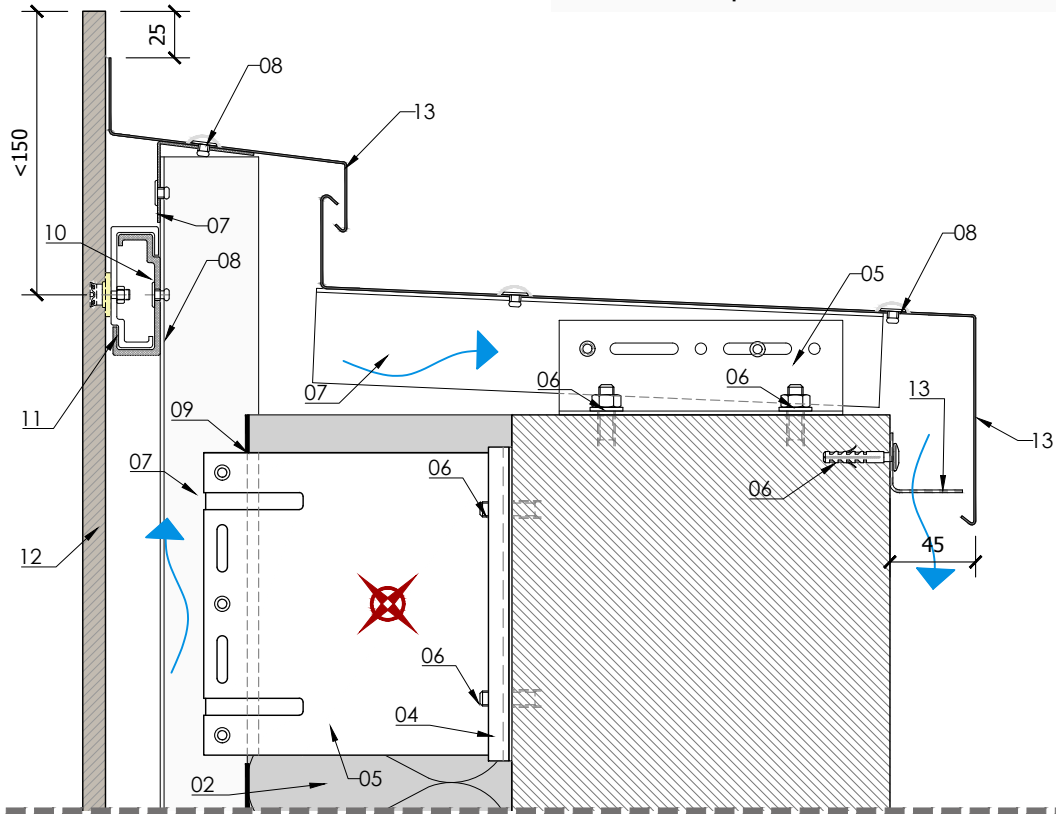
01 - Support (eg: concrete, core bricks...)
02 - Insulation layer (eg: mineral wool...)
03 - Insulation layer fixing element
04 - Thermo-stop

05 - Bracket (eg: aluminium, galvanised steel...)
06 - Anchor
07 - Vertical T profile
08 - Fischer FZP-II 11x8 M6/T/12 PA
09 - Vapour barrier

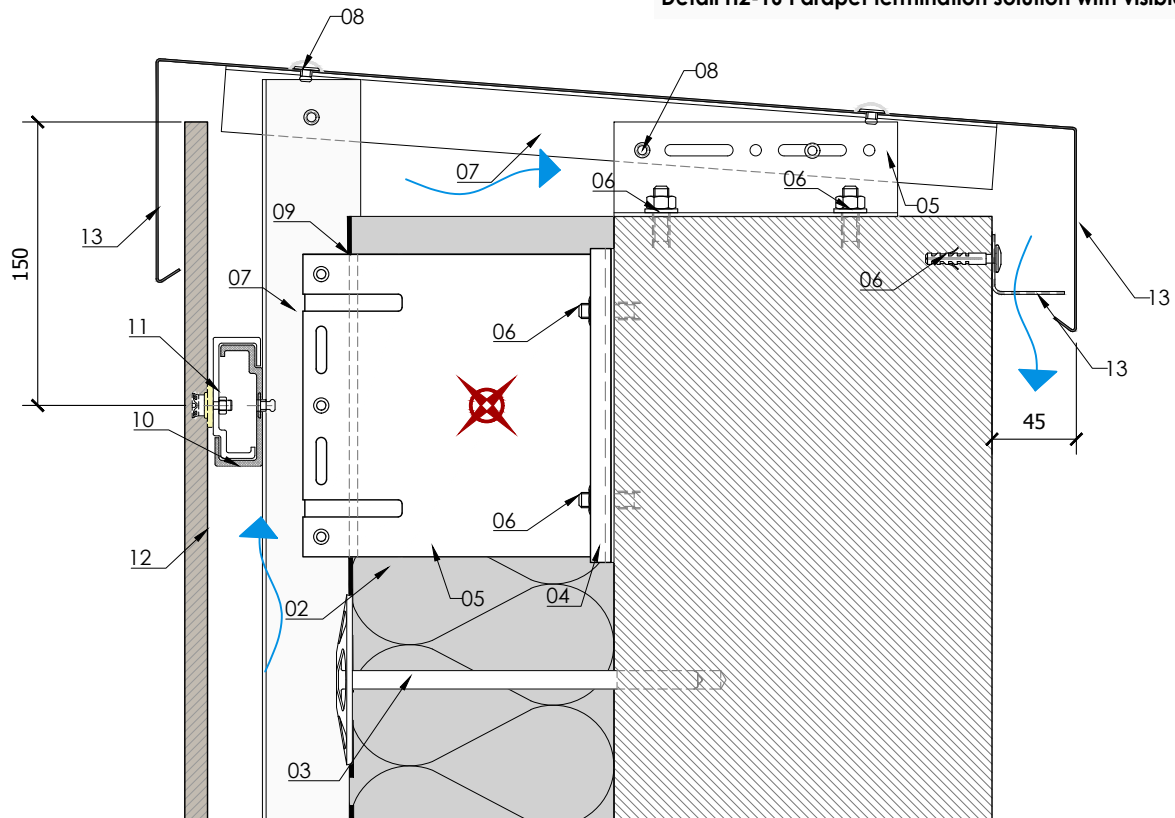
10 - Horizontal C rail
11 - Clip/Hanger
12 - Lapitec 12 mm thickness
13 - Flashing

SYSTEM LAPITEC H2 FIXING WITH FZP II T

Detail H2-15 Parapet termination solution with invisible flashing



Detail H2-16 Parapet termination solution with visible flashing



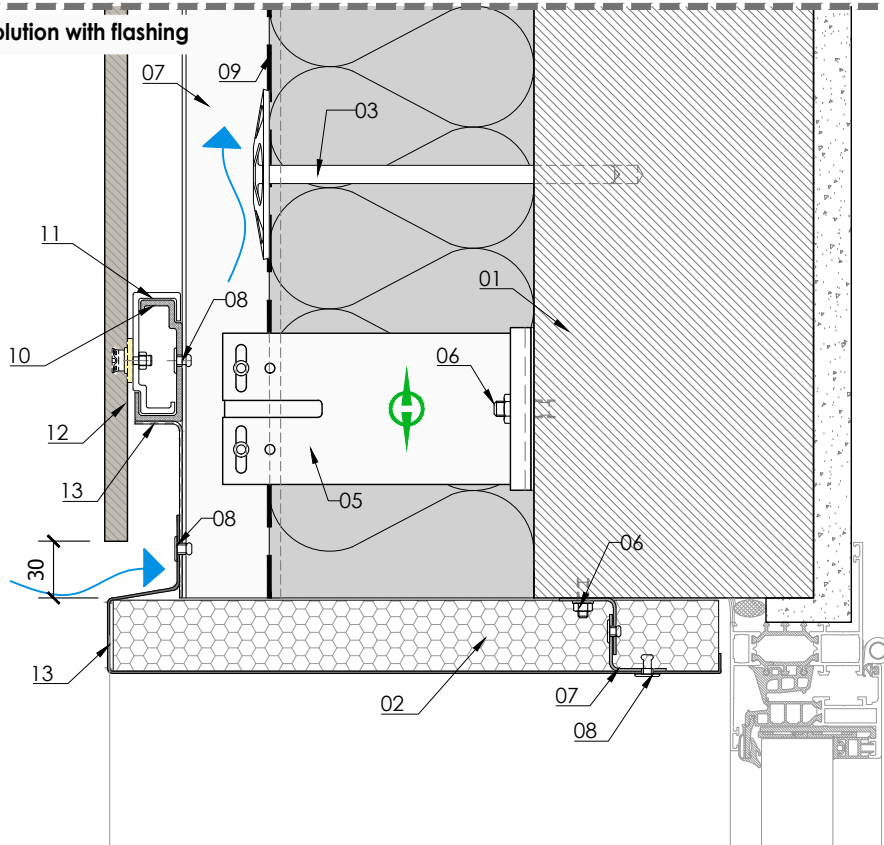
MATERIALS:

- 01 - Support (eg: concrete, core bricks...)
- 02 - Insulation layer (eg: mineral wool...)
- 03 - Insulation layer fixing element
- 04 - Thermo-stop

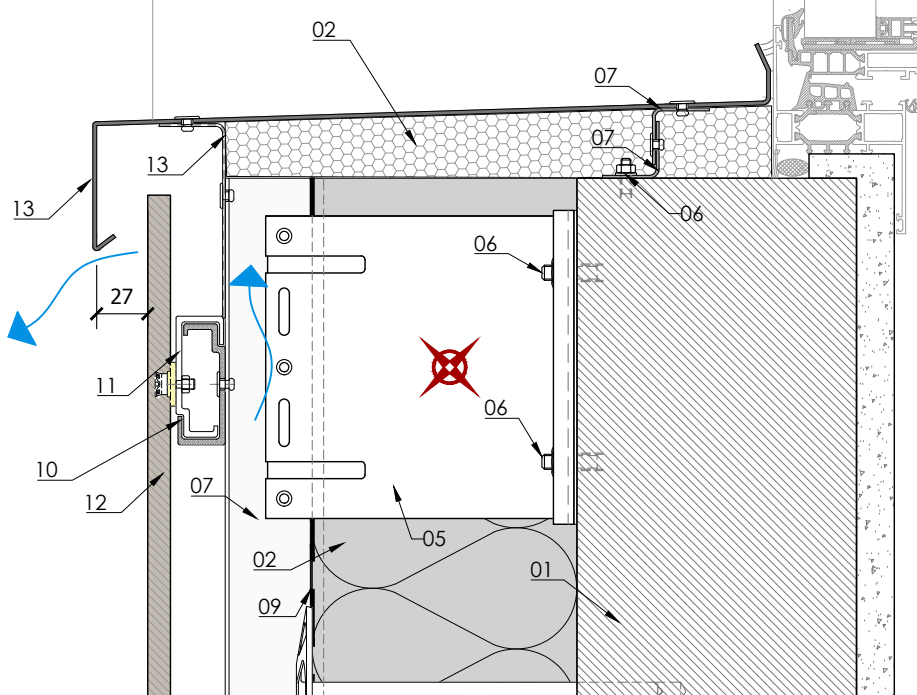
- 05 - Bracket (eg: aluminium, galvanised steel...)
- 06 - Anchor
- 07 - Vertical T profile
- 08 - Fischer FZP-II 11x8 M6/T/12 PA
- 09 - Vapour barrier

- 10 - Horizontal C rail
- 11 - Clip/Hanger
- 12 - Lapitec 12 mm thickness
- 13 - Flashing

Detail H2-17 Window lintel solution with flashing



Detail H2-18 Windowsill solution with flashing



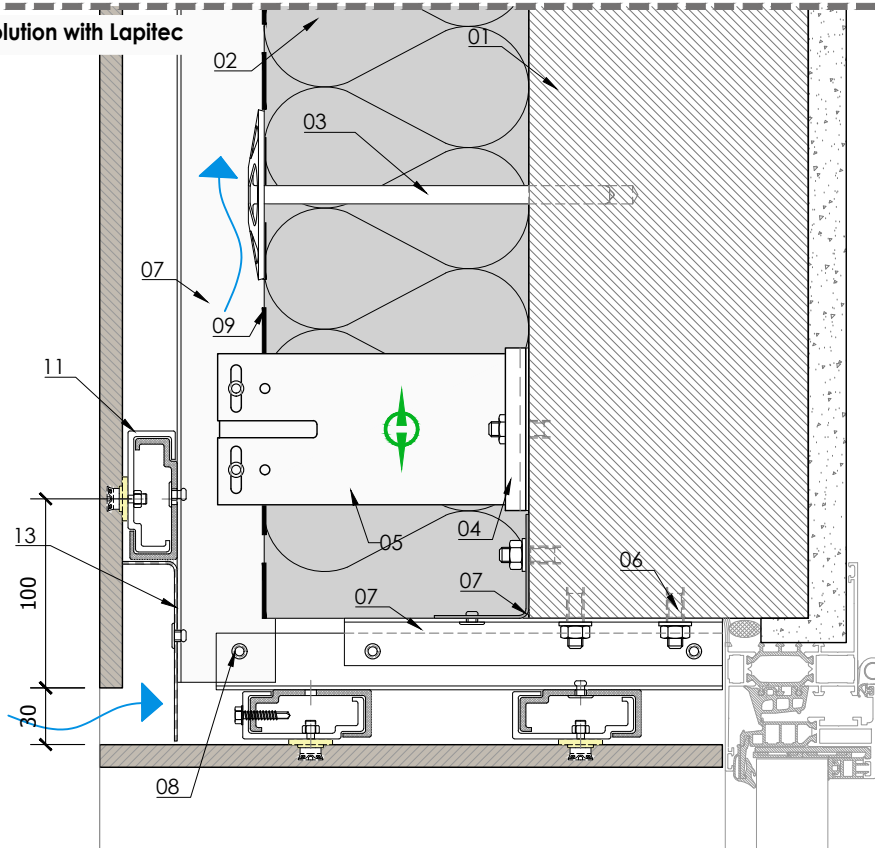
MATERIALS:

01 - Support (eg: concrete, core bricks...)
02 - Insulation layer (eg: mineral wool...)
03 - Insulation layer fixing element
04 - Thermo-stop

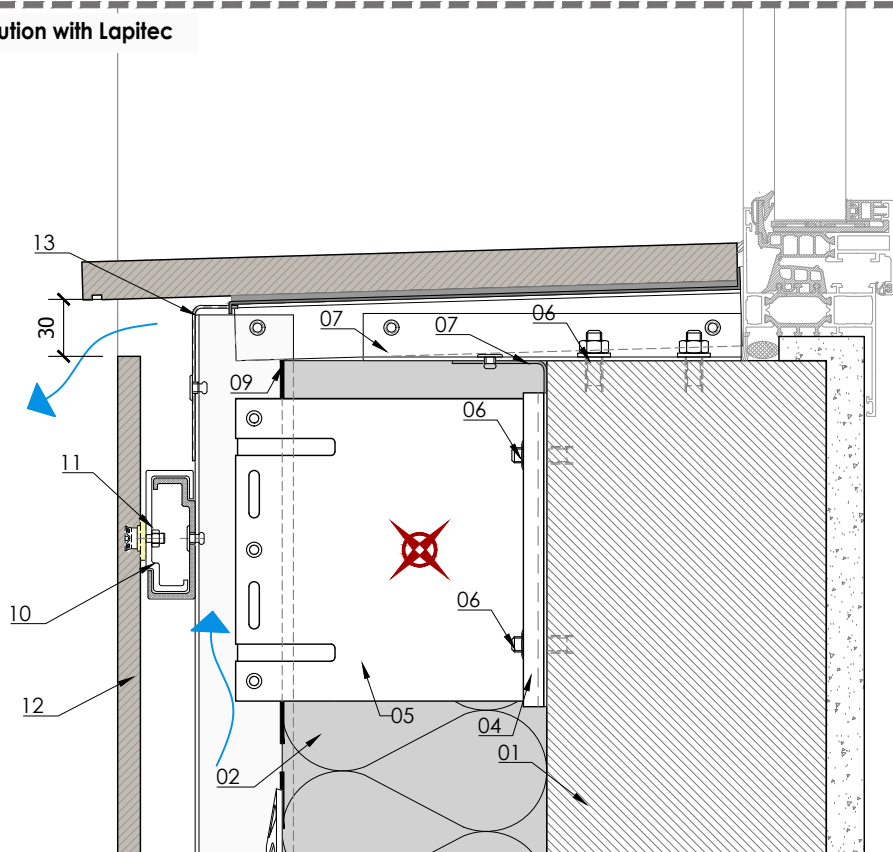
05 - Bracket (eg: aluminium, galvanised steel...)
06 - Anchor
07 - Vertical T profile
08 - Fischer FZP-II 11x8 M6/T/12 PA
09 - Vapour barrier

10 - Horizontal C rail
11 - Clip/Hanger
12 - Lapitec 12 mm thickness
13 - Flashing

Detail H2-19 Window lintel solution with Lapitec



Detail H2-20 Windowsill solution with Lapitec



MATERIALS:

- 01 - Support (eg: concrete, core bricks...)
- 02 - Insulation layer (eg: mineral wool...)
- 03 - Insulation layer fixing element
- 04 - Thermo-stop

- 05 - Bracket (eg: aluminium, galvanised steel...)
- 06 - Anchor
- 07 - Vertical T profile
- 08 - Fischer FZP-II 11x8 M6/T/12 PA
- 09 - Vapour barrier

- 10 - Horizontal C rail
- 11 - Clip/Hanger
- 12 - Lapitec 12 mm thickness
- 13 - Flashing